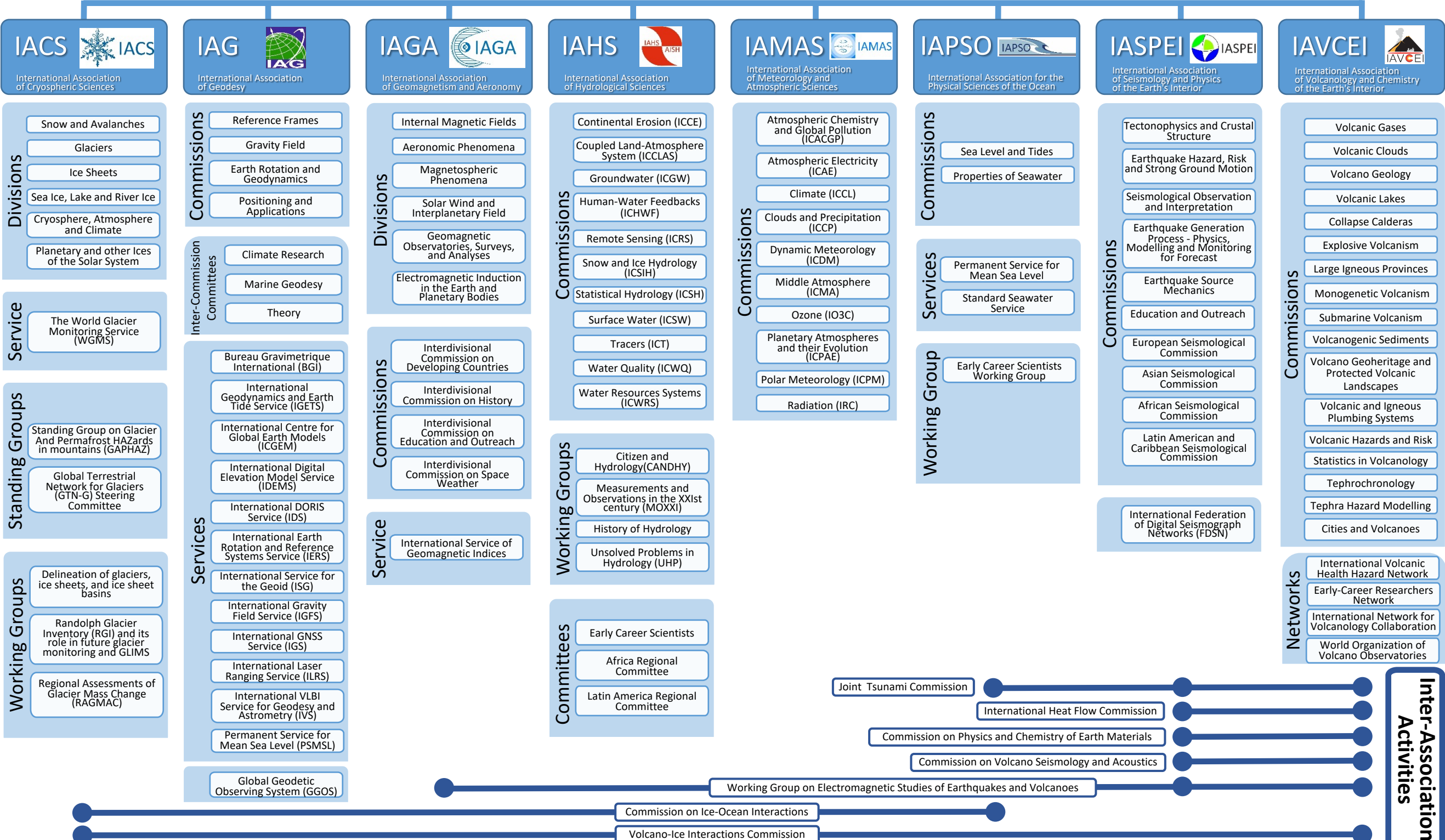


International Union of Geodesy and Geophysics (IUGG)

Associations



IACS  International Association of Cryospheric Sciences

- Divisions**
- Snow and Avalanches
 - Glaciers
 - Ice Sheets
 - Sea Ice, Lake and River Ice
 - Cryosphere, Atmosphere and Climate
 - Planetary and other Ices of the Solar System

- Service**
- The World Glacier Monitoring Service (WGMS)

- Standing Groups**
- Standing Group on Glacier And Permafrost HAZards in mountains (GAPHAZ)
 - Global Terrestrial Network for Glaciers (GTN-G) Steering Committee

- Working Groups**
- Delineation of glaciers, ice sheets, and ice sheet basins
 - Randolph Glacier Inventory (RGI) and its role in future glacier monitoring and GLIMS
 - Regional Assessments of Glacier Mass Change (RAGMAC)

IAG  International Association of Geodesy

- Commissions**
- Reference Frames
 - Gravity Field
 - Earth Rotation and Geodynamics
 - Positioning and Applications
- Inter-Commission Committees**
- Climate Research
 - Marine Geodesy
 - Theory

- Services**
- Bureau Gravimetric International (BGI)
 - International Geodynamics and Earth Tide Service (IGETS)
 - International Centre for Global Earth Models (ICGEM)
 - International Digital Elevation Model Service (IDEMS)
 - International DORIS Service (IDS)
 - International Earth Rotation and Reference Systems Service (IERS)
 - International Service for the Geoid (ISG)
 - International Gravity Field Service (IGFS)
 - International GNSS Service (IGS)
 - International Laser Ranging Service (ILRS)
 - International VLBI Service for Geodesy and Astrometry (IVS)
 - Permanent Service for Mean Sea Level (PSMSL)
 - Global Geodetic Observing System (GGOS)

IAGA  International Association of Geomagnetism and Aeronomy

- Divisions**
- Internal Magnetic Fields
 - Aeronomic Phenomena
 - Magnetospheric Phenomena
 - Solar Wind and Interplanetary Field
 - Geomagnetic Observatories, Surveys, and Analyses
 - Electromagnetic Induction in the Earth and Planetary Bodies

- Commissions**
- Interdivisional Commission on Developing Countries
 - Interdivisional Commission on History
 - Interdivisional Commission on Education and Outreach
 - Interdivisional Commission on Space Weather

- Service**
- International Service of Geomagnetic Indices

IAHS  International Association of Hydrological Sciences

- Commissions**
- Continental Erosion (ICCE)
 - Coupled Land-Atmosphere System (ICCLAS)
 - Groundwater (ICGW)
 - Human-Water Feedbacks (ICHWF)
 - Remote Sensing (ICRS)
 - Snow and Ice Hydrology (ICSIH)
 - Statistical Hydrology (ICSH)
 - Surface Water (ICSW)
 - Tracers (ICT)
 - Water Quality (ICWQ)
 - Water Resources Systems (ICWRS)

- Working Groups**
- Citizen and Hydrology (CANDHY)
 - Measurements and Observations in the XXIst century (MOXXI)
 - History of Hydrology
 - Unsolved Problems in Hydrology (UHP)

- Committees**
- Early Career Scientists
 - Africa Regional Committee
 - Latin America Regional Committee

IAMAS  International Association of Meteorology and Atmospheric Sciences


- Commissions**
- Atmospheric Chemistry and Global Pollution (ICACGP)
 - Atmospheric Electricity (ICAE)
 - Climate (ICCL)
 - Clouds and Precipitation (ICCP)
 - Dynamic Meteorology (ICDM)
 - Middle Atmosphere (ICMA)
 - Ozone (IO3C)
 - Planetary Atmospheres and their Evolution (ICPAE)
 - Polar Meteorology (ICPM)
 - Radiation (IRC)

IAPSO  International Association for the Physical Sciences of the Ocean

- Commissions**
- Sea Level and Tides
 - Properties of Seawater

- Services**
- Permanent Service for Mean Sea Level
 - Standard Seawater Service

- Working Group**
- Early Career Scientists Working Group

IASPEI  International Association of Seismology and Physics of the Earth's Interior

- Commissions**
- Tectonophysics and Crustal Structure
 - Earthquake Hazard, Risk and Strong Ground Motion
 - Seismological Observation and Interpretation
 - Earthquake Generation Process - Physics, Modelling and Monitoring for Forecast
 - Earthquake Source Mechanics
 - Education and Outreach
 - European Seismological Commission
 - Asian Seismological Commission
 - African Seismological Commission
 - Latin American and Caribbean Seismological Commission

- International Federation of Digital Seismograph Networks (FDSN)**

IAVCEI  International Association of Volcanology and Chemistry of the Earth's Interior

- Commissions**
- Volcanic Gases
 - Volcanic Clouds
 - Volcano Geology
 - Volcanic Lakes
 - Collapse Calderas
 - Explosive Volcanism
 - Large Igneous Provinces
 - Monogenetic Volcanism
 - Submarine Volcanism
 - Volcanogenic Sediments
 - Volcano Geoheritage and Protected Volcanic Landscapes
 - Volcanic and Igneous Plumbing Systems
 - Volcanic Hazards and Risk
 - Statistics in Volcanology
 - Tephrochronology
 - Tephra Hazard Modelling
 - Cities and Volcanoes

- Networks**
- International Volcanic Health Hazard Network
 - Early-Career Researchers Network
 - International Network for Volcanology Collaboration
 - World Organization of Volcano Observatories

Union Commissions

- Commission on Cryospheric Deformation
- Commission on Ice-Ocean Interactions
- Volcano-Ice Interactions Commission
- Volcano Geodesy
- Working Group on Electromagnetic Studies of Earthquakes and Volcanoes
- Commission on Physics and Chemistry of Earth Materials
- Commission on Volcano Seismology and Acoustics
- International Heat Flow Commission
- Joint Tsunami Commission

Inter-Association Activities

- CCEC CLIMATIC AND ENVIRONMENTAL CHANGE
- CMG MATHEMATICAL GEOPHYSICS
- GRC GEOPHYSICAL RISK AND SUSTAINABILITY
- SEDI STUDY OF THE EARTH'S DEEP INTERIOR
- UCPS PLANETARY SCIENCES